

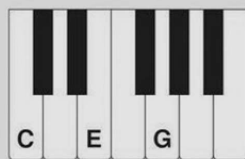
Lead Sheet

In popular music, the “lead” means the melody.
A *lead sheet* consists of a melody *only*, with **chord symbols** written above the staff.

Explore playing *melody* and *harmony* from a lead sheet by following the directions below.

Chord References in C Major

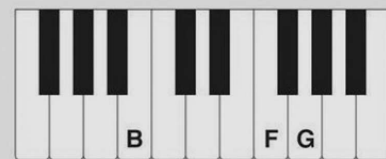
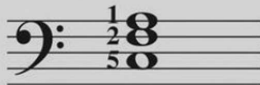
Practice the chords used in *Home on the Range*.



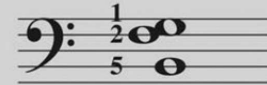
C



F



G7



- Play the melody only with the damper pedal, as shown.
(Pedal marks are usually not included as part of a lead sheet.)
- Then add L.H. **blocked chords** on *beat 1* of each measure as indicated by the chord symbols.
(If no chord symbol is present, repeat the chord of the previous measure.)

Home on the Range

Moderately Traditional

Oh, give me a home where the buffalo roam and the
deer and the antelope play, where

9 C F

sel - dom is heard a dis - cour - ag - ing word, and the

13 C G7 C

skies are not cloud - y all day.

17 C G7 C

f Home, home on the range, *mf* where the deer and the

22 (C) G7 C

an - te - lope play, where sel - dom is heard a dis -

27 F C G7 C

cour - ag - ing word, and the skies are not cloud - y all day.